



NeMeA Sistemi ®



App G.I.S.



Prodotti



USV HYDRA



Press Media



NeMeA Sistemi ®

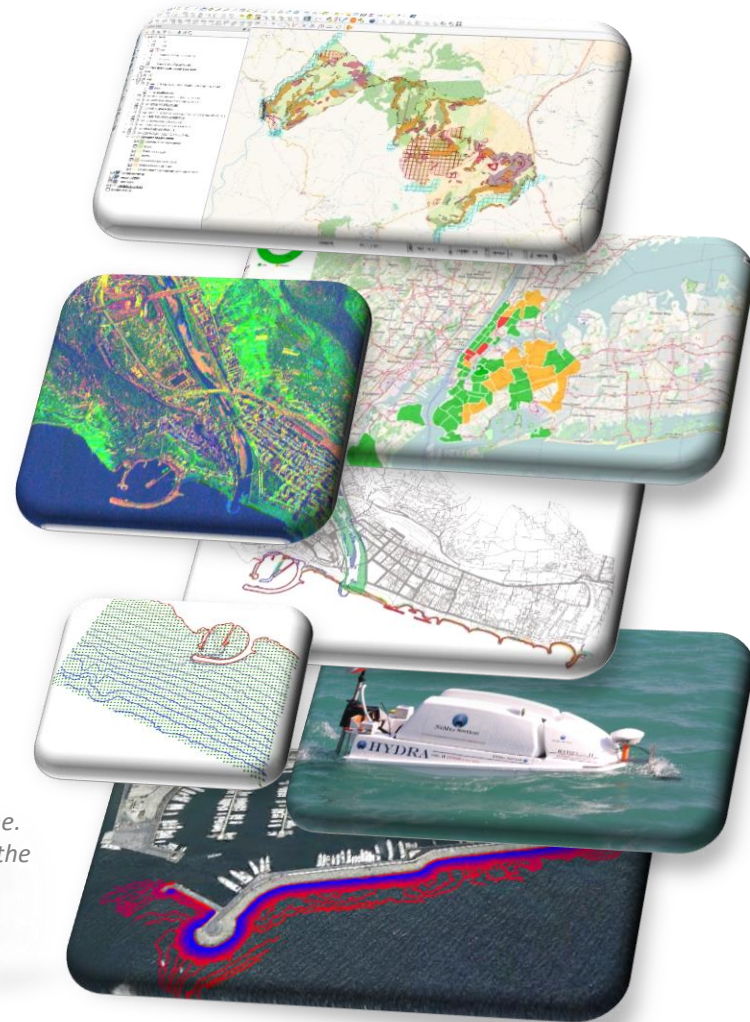
NeMeA Sistemi in brief



NeMeA Sistemi is an **Italian SME company**, established in 2002. It operates in geographic information systems (**GIS**) and provides highly specialized solutions in data and systems integration, with particular focus on start-up GIS for utility companies and local government. NeMeA Sistemi has more than ten years experience in GIS, remote sensing, geospatial solutions and photogrammetry. In the field of USV (Unmanned Surface Vessel) NeMea Sistemi srl designed, built, engineered and regularly registered a multifunctional USV conducted by remote control. It is equipped with a centimetric GNSS receiver, a single-beam echosounder and an advanced sensoristic system which allows to collect bathymetrics data directly in GIS environment.

Nemea is a sacred forest to the Gods, it extends from Mount Citerone to the plain that bears its name. In it there was a lion of immense strength and particular ferocity, descended directly from the disk of the moon, perhaps brother of the Sphinx of Thebes

*Myth of Heracles:
450 approximately a.C.*



Mission

Nemea Sistemi uses the most reliable and versatile GIS technology, associated and combined with innovative measuring instruments, devices and instruments of great diffusion

Nemea Sistemi supports in Italy more than 450 public administrations with GIS solutions dedicated to land administration, register of parcels, buildings and other physical objects

Nemea Sistemi implements innovative solutions, fitting the project directly on the customer's needs, forming and supporting its technical resources, integrating data, creating vertical developments for specific needs.



Geographic Information System for SmartCity

Building Smart Cities

Geospatial technology helps local governments make smarter decisions for efficient urban planning.



What we do



Infrastructure Management

Urban Planning

Citizen Engagement



Infrastructure Management



BT.NET - Electricity network management system



Geospatial Network Management Systems for water, electricity, public lighting and roads

Our applications provides workflows and "intelligent" allocation processes to operators, maintenance workers, ensuring the harmonization of the network types and the underlying / constituent objects.



AQUA - Water network management system



IP.NET – Public Lighting network management system



ROAD.NET – Road Asset and Pavement management system

Urban Planning



**CDU.NET - Urban Planning
Destination Management
System**

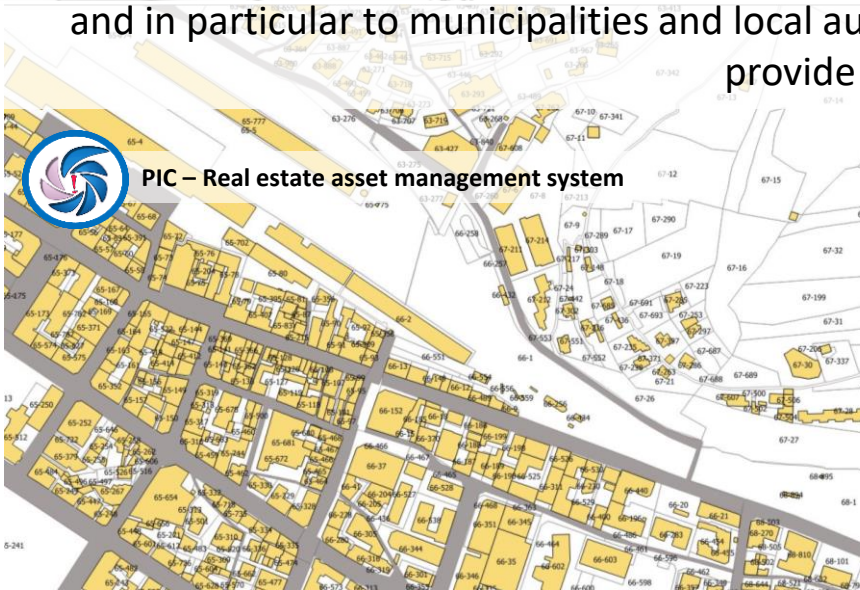


Geospatial Land Administration Solutions

Our applications are addressed to all the entities that perform planning and control functions of the territory and in particular to municipalities and local authorities that need to represent urban planning tools and provide services to citizens.



PIC – Real estate asset management system



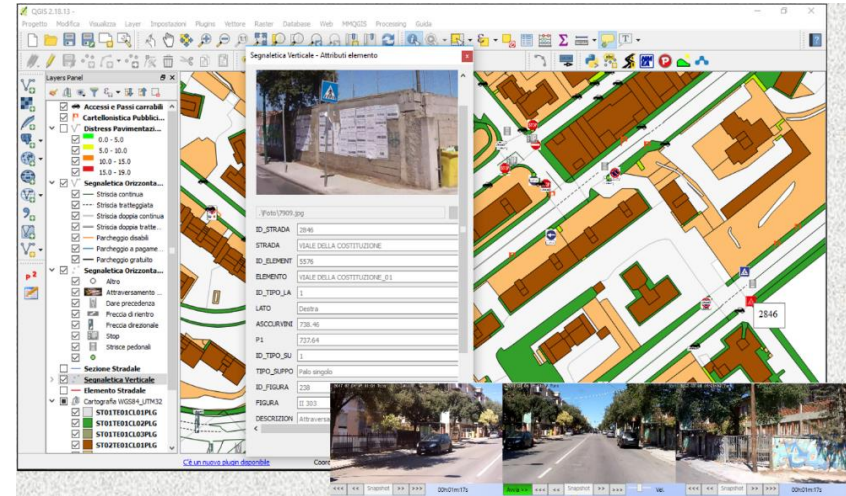
CIVICI.NET – Management system of house numbering



GIS for Road Cadaster Solution

The Road Cadaster based on a GIS system is now an indispensable tool for the managers of the road networks, both for the knowledge of the qualitative and quantitative status of the assets, and for the planning of maintenance interventions on the road network and related appurtenances.

Nemea Sistemi is able to create a database of Road Cadaster where surveys will be carried out with a vehicle equipped with high resolution cameras and satellite positioning system. From the survey in the field, with post-processing activities, the vector paths of the driving lanes and the resulting graph will be produced and all the pertinences of interest will be cataloged and georeferenced on the GIS map.



High performance vehicle

VSS Light Box



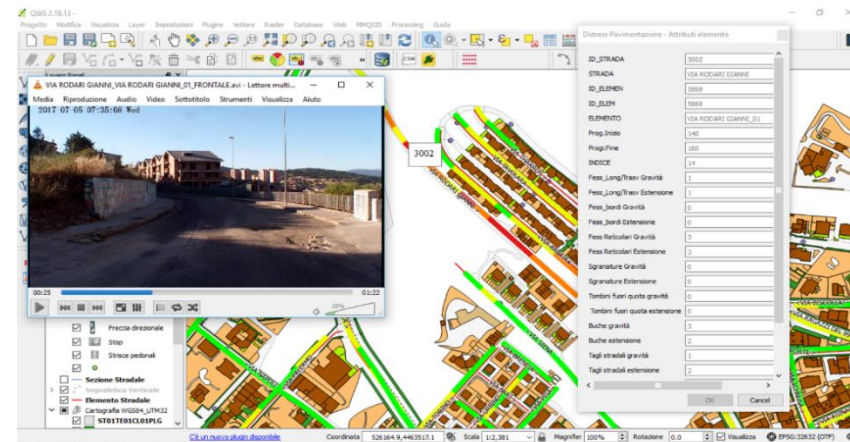
Piattaforma di acquisizione e sincronizzazione



Odometro di precisione

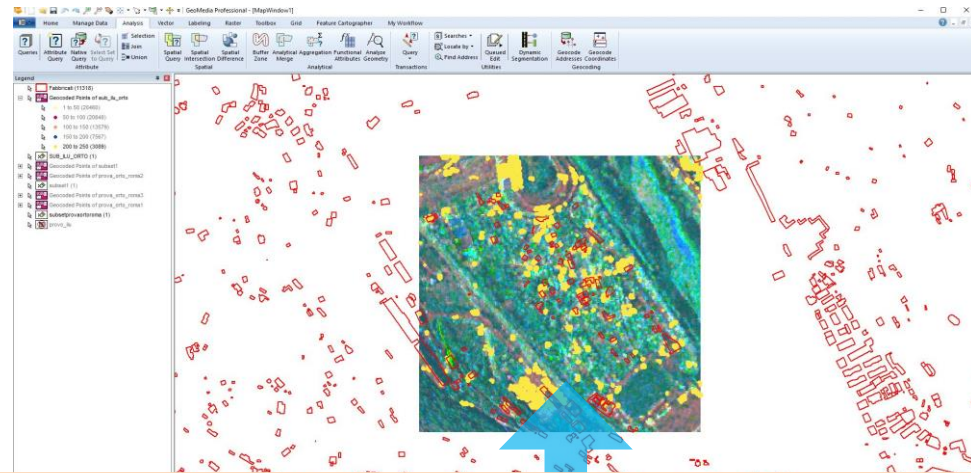


Veicolo ad Alto rendimento



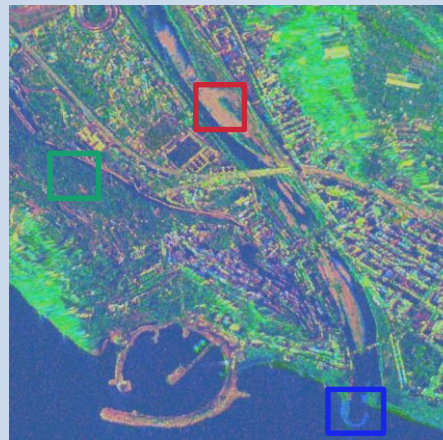
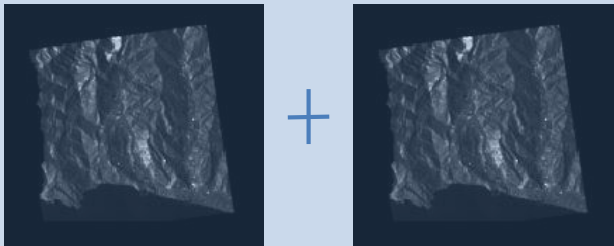
Building detection from Radar SAR Satellite Images

Based on Radar SAR Satellite Images with high resolution, Nemea Sistemi are able to identify Buildings using the technique of **INTERFEROMETRY** for processing two images captured in two different time periods with the aim of obtaining an image in which, phase information will be crucial to our purpose.



Through a few steps in GIS software, is possible to vectorize the pixels centroids with the high coherence value and create a Buildings layer to use in the Land Administration Salution.

Built areas – Interferometric Land Use



RED / YELLOW: High interferometric coherence
(Buildings, metal objects, roads, rocks)

GREEN: Minimum intensity values
(Vegetation)

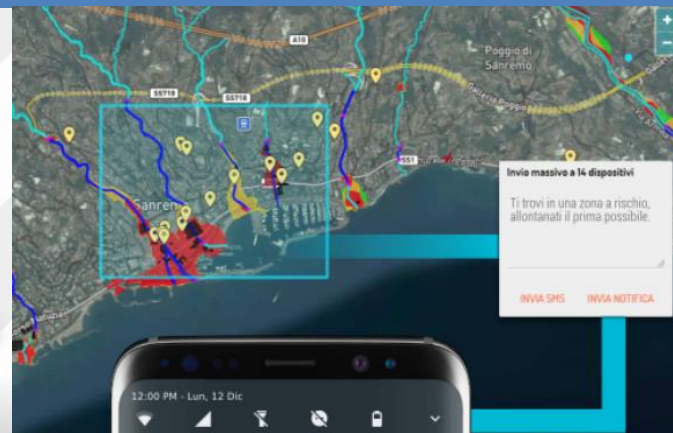
BLUE: change of intensity
(Changes)

Citizen Engagement

inforMAPP



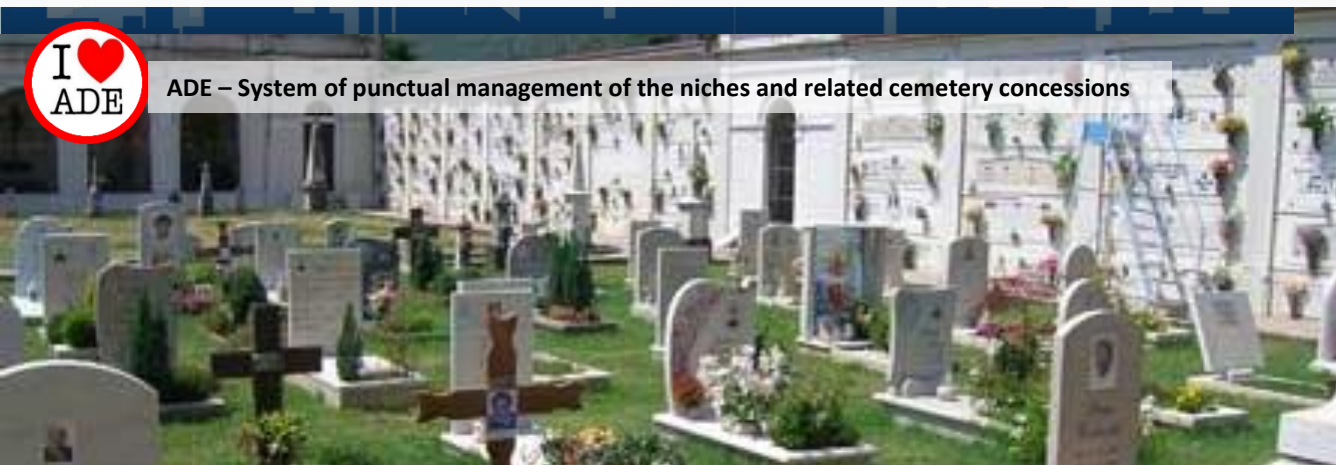
inforMAPP – APP to view the positions of citizens who are in areas at risk



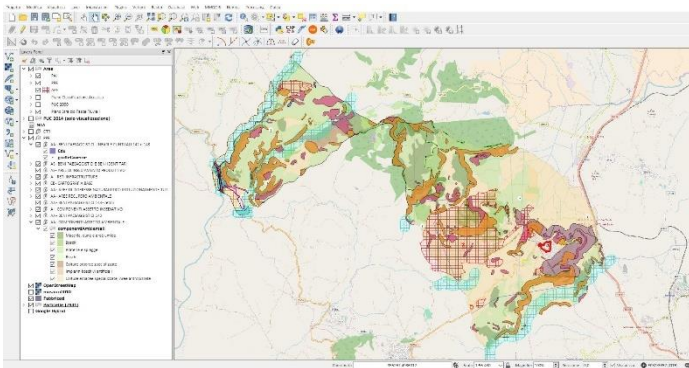
Our solutions empower citizen to play an active role within the community and collaborate with Institution makers on urban issues



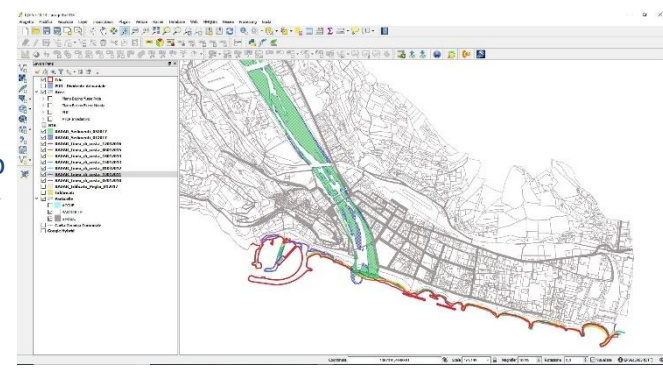
ADE – System of punctual management of the niches and related cemetery concessions



GIS Solution Overview



Our solutions allow to represent, through the use of dynamically maps, questionable and georeferenced, analysis and functional studies aimed to providing added value to the company through the possibility of correlating analytical data with spatial data.



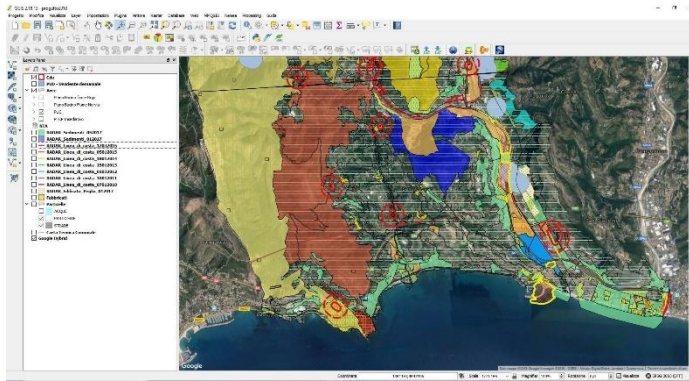
GIS Desktop Application

Mobile Solutions

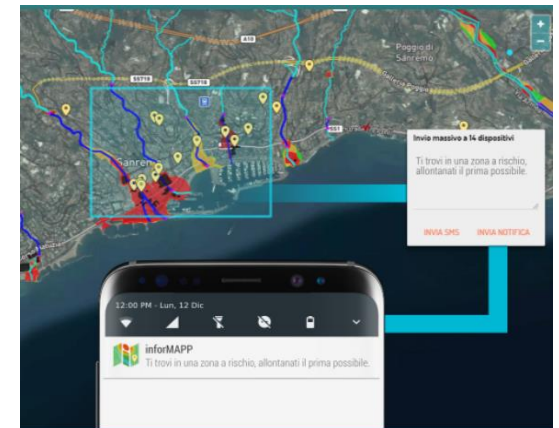
GeoPortals

GIS Application in Cloud

Apps for Smartphone



The integration of these systems with different sensors (smart meters, drones, video cameras, smart panels, etc.), makes these solutions useful in the design and management of land use, networks (Water, Electricity, Gas, Telecommunication), intelligent management of activities maintenance, early warning systems and incident management.



Grazie!



NeMeA Sistemi

Falcioni Gianluca

Business Development Manager

g.falcioni@nemeasistemi.com

mobile +39 3938500258

ufficio +39 0184872105



Lostaff Nemea



@NeMeASistemi

www.nemeasistemi.com



NeMeA Sistemi ®