

Master  
IPET

industrial plant  
engineering and  
technologies

# MIPET

## Operative Modules

[www.itim.unige.it/mipet/modules](http://www.itim.unige.it/mipet/modules)



MIPET Operative Modules are devoted to transfer knowledge and capabilities on specific specific issues related to Industrial Plant Engineering & Technologies.

The MIPET Operative Modules are open to Engineers and Technicians and include lectures, exercises, case studies, simulations and role play games coordinated by Academic and Technical Experts coming from Leading Universities and Companies

Sponsors

**ABB**

**BOMBARDIER**

**DANIELI**  
CENTRO COMBUSTION

**Duferco**  
Engineering

**FISIA ITALIMPIANTI**

**PAUL WURTH**

**PRISMA**  
Impianti

**PMS**

**tenova**



MIPET

[www.itim.unige.it/mipet/modules](http://www.itim.unige.it/mipet/modules)

Copyright © 2012 Genoa University

[mipet@itim.unige.it](mailto:mipet@itim.unige.it)

# Master IPET

industrial plant  
engineering and  
technologies

## Engineering Standards & Regulations

Sponsors

ABB

BOMBARDIER

DANIELI

Duferco  
Engineering

FISIA ITALIMPIANTI

PAUL WURTH

PIRISMA  
Impianti

PMS

tenova



### Operative Module of MIPET



Industrial Plant Engineering & Technologies

### Objectives

**Engineering Standards & Regulations** is devoted to organically present the existing and future norms to be adopted for the design and construction of Industrial plants; the course provides knowledge for supporting problem solving for companies facing for the first time regulations and codes in National and International industrial plant projects

### Course Attendees

**Engineering Standards & Regulations** is designed for young engineers, specialists and professionals active in Industrial Plants enabling them to make use of the state-of-the-art norms, codes and standards for the design of equipment and systems.

### Structure and Approach

This module is organized as a 35 hours course to be completed in 5 days by interactive sessions with experts coming from Industry and R&D. The approach includes lecturing, case studies, exercises, experiences, RPG, competitive and cooperative simulations



MIPET

[www.itim.unige.it/mipet/modules](http://www.itim.unige.it/mipet/modules)

Copyright © 2012 Genoa University

[mipet@itim.unige.it](mailto:mipet@itim.unige.it)

# Master IPET

industrial plant engineering and technologies

## MIPET Operative Module

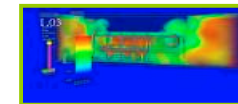
### Standards & Regulations



Sponsors



- Large Industrial Plants: an Overview on Standards, Regulations and Administration Authorization Processes along Project Life Cycle
- Case Study on Impact of International Regulations on Industrial Plants with Special Attention to Directive 2006/42/CE, ATEX, PED.
- Quality Assurance and Control in Industrial Plants
- Quality, Safety and Environment Integrated Management in term of standards and regulations
- Environmental Impact Evaluation
- Introduction on Fire Safety and Explosion Risk for Industrial Plants. Risk Analysis for Fires and Explosions: methods, documents and classification
- Safety Concept. Innovative Engineering Solutions for Fire and Explosions in Industrial Plants. Combination of Explosion/Fire Risks
- Fire Safety and Explosion Simulation
- Actions: organization, prevention, protection and mitigation solutions
- EXPLOSAD (Experience on Process Plant Safety Design): Case Study based on Simulation applied to fire and explosion protection applied to an industrial plant



Each Operative Module includes a knowledge assessment and the attendees successfully completing each single Module receive a certificate from Genoa University. The Educational Material specific of the course is provided to each attendee

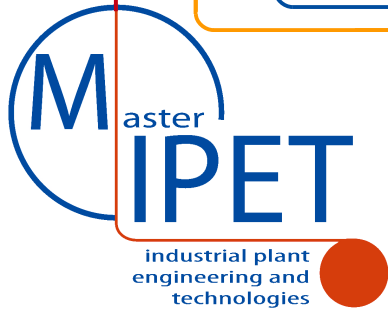


MIPET

[www.itim.unige.it/mipet/modules](http://www.itim.unige.it/mipet/modules)

Copyright © 2012 Genoa University

[mipet@itim.unige.it](mailto:mipet@itim.unige.it)



# Academia, Institutions & Industries

## MIPET ORGANIZERS & SUPPORTING INSTITUTIONS



## SPONSOR COMPANIES

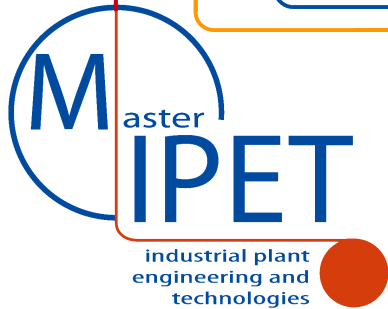


MIPET

[www.itim.unige.it/mipet/modules](http://www.itim.unige.it/mipet/modules)

Copyright © 2012 Genoa University

[mipet@itim.unige.it](mailto:mipet@itim.unige.it)



# References

For Additional Info:

MIPET Operative Modules

MIPET Thematic Modules

[mipet@itim.unige.it](mailto:mipet@itim.unige.it)

[www.itim.unige.it/mipet](http://www.itim.unige.it/mipet)

Dott.ssa Ilaria Burlando  
PERFORM, University of Genoa  
Piazza dell'Annunziata 2, 16124 Genova, Italy  
Tel +39 010 209 9466 - Fax +39 010 2099469  
Email [burlando@perform.unige.it](mailto:burlando@perform.unige.it)  
URL [www.master.impianti.unige.it](http://www.master.impianti.unige.it)



Sponsors

**ABB**

**BOMBARDIER**

**DANIELI**

**Duferco Engineering**

**FISIA ITALIMPIANTI**

**PAUL WURTH**

**PRISMA Impianti**

**PMS**

**tenova**



MIPET

[www.itim.unige.it/mipet/modules](http://www.itim.unige.it/mipet/modules)

Copyright © 2012 Genoa University

[mipet@itim.unige.it](mailto:mipet@itim.unige.it)